

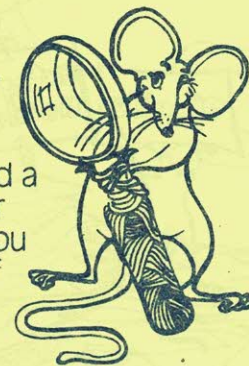
Now after the stamps have dried,
you are ready to place them in your album.



Illustrations by Gerrie Natta, Perth.

SOAKING STAMPS OFF PAPER ...the RIGHT WAY

Like so many things, there is a right way and a wrong way of soaking stamps off paper for your collection. If you use the RIGHT way, you will not damage stamps, retain the value of important ones, and so have a valuable collection.



So, here is what you do.

1. Choose a place.
You will need a spot where spilt drops of water won't cause damage. Talk to Mum or Dad about this.



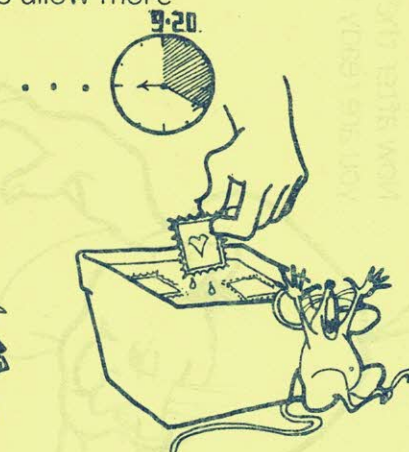
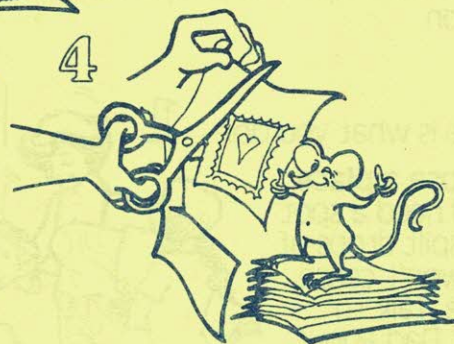
2. What you need.
You will need two containers — plastic ice-cream bowls are just fine. You will also need some paper towels, or blotting paper or something else which soaks up water.



3. Sort out the stamps. Sort out your stamps into two piles — "OK" and "extra care needed". Stamps needing extra care are those which are on pieces of blue-lined, or red-lined envelopes, and any stamps on that yellow-brown heavy envelope type of paper (called manilla). And any

stamps more than about 50 years old need care, because with some that age, from some countries, the ink may run.

4. Cut away excess paper. Cut excess paper from around your stamps, taking care NOT to cut your stamps.



6. Rinse in cold water and place stamps face down. As the stamps float off, place them in the other bowl filled this time with COLD water, which will give them a last wash to get rid of glue. Then place them FACE DOWN on the paper towel you are using.

7. Cover and allow to dry. Place a second sheet of paper towel or blotting paper over your wet stamps, and to help keep your stamps flat, put a heavy book on top. Allow them to dry overnight.



8. Stamps needing extra care. Remember those stamps we put aside at step 3 above. These needed special treatment. After carefully cutting the excess paper off, float them face up in a bowl of cold water. Yes, FLOAT! If you carefully place them in the bowl, you will find that they will sit above the water so that no water touches the stamp. This is important because blue-lined envelopes, for instance can mean blue-coloured stamps!